

Fix Pin Tool FPT



Description

Specifically developed for the percussion application of the impact nail in concrete. Inserting the nail up to the collar into the setting tool will cause the nail to clutch, preventing it from falling during the application. Our impact nail setting tool has an ergonomic design that protects the hand from eventual hammer blows.

Features & Benefits

- Simple and quick installation
- No pre-drilling required
- Fasten by hammering in
- Only little effort required
- This tool is the best alternative for environments sensitive to noise pollution
- No power load required. Uses specially designed IN series nail from 14mm to 27mm

Low Velocity Tool LV721

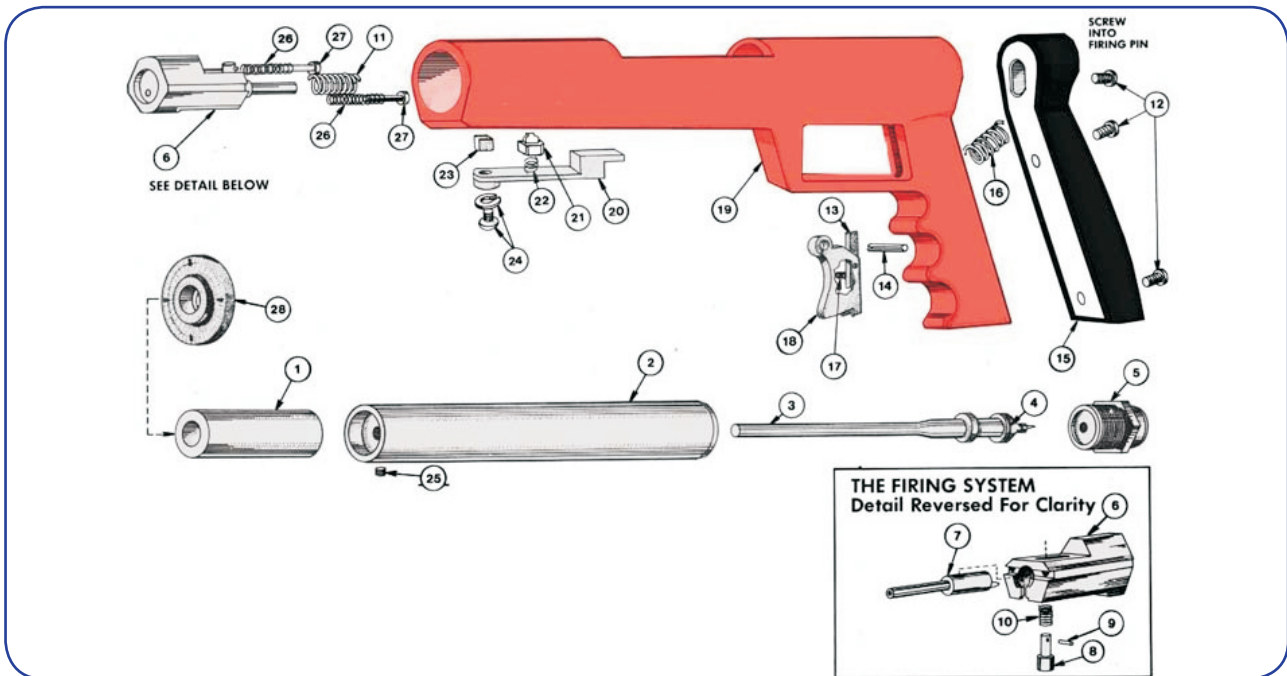


Description

The LV721 is a low velocity, single shot tool which can be used to install ballistic point pins. .300 head drive pins, 8mm head drive pins and 1/4"-20 threaded studs up to 1-1/2" in total length. Commonly used in the drywall trade, the tool has a balanced, simple design that makes an operation and maintenance easy.

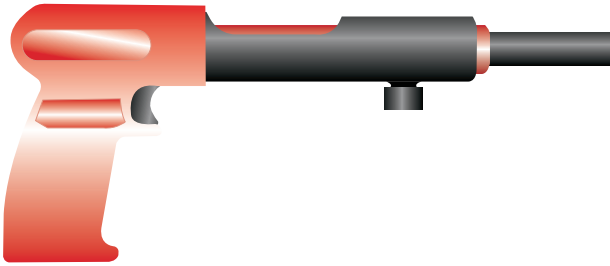
Features & Benefits

- Minimum recoil
- Solid die cast body
- New powder coating finish
- 0.22 calibre cartridge extraction system
- Fastens upto 37mm
- Ideal for metal track, electrical boxes, ceiling clips & conduit clips.



Item	LV721 Part Number	Original Part Number	Description
1	LV2001	12258	BARREL EXTENSION
2	LV2002	12108	BARREL ASSEMBLY
3	LV2003	33657	PISTON W/RING
4	LV2004	33665	PISTON RING
5	LV2005	33650	BREECH PLUG
6	LV2006	33640	BREECH BLOCK
7	LV2007	12085	FIRING PIN
8	LV2008	81649	SEAR
9	LV2009	33671	SEAR & TRIG BAR ROLL PIN
10	LV2010	33659	SEAR SPRING
11	LV2011	33658	FIRING PIN SPRING
12	LV2012	33674	HANDLE & FIRING PIN SCREW
13	LV2013	33667	TRIGGER BAR
14	LV2015	81681	RUBBER HANDLE
16	LV2016	33647	TRIGGER SPRING
17	LV2017	33668	TRIGGER BAR SPRING
18	LV2018	33646	TRIGGER BAR SPRING
19	LV2019	22101	HANDLE ASSEMBLY
20	LV2020	22088	STOP PIN COVER
21	LV2021	33645	BARREL STOP PIN
22	LV2022	12388	BARREL STOP PIN SPRING
23	LV2023	33679	RUBBER BUMPER
24	LV2024	22790	STOP PIN COVER SCREW
25	LV2025	12260	BARREL SET SCREW
26	LV2026	33642	BREECH BLOCK SPRING
27	LV2027	33641	BREECH SPRING PIN
28	LV2028	12266	SPALL GUARD

Low Velocity Tool LVM70

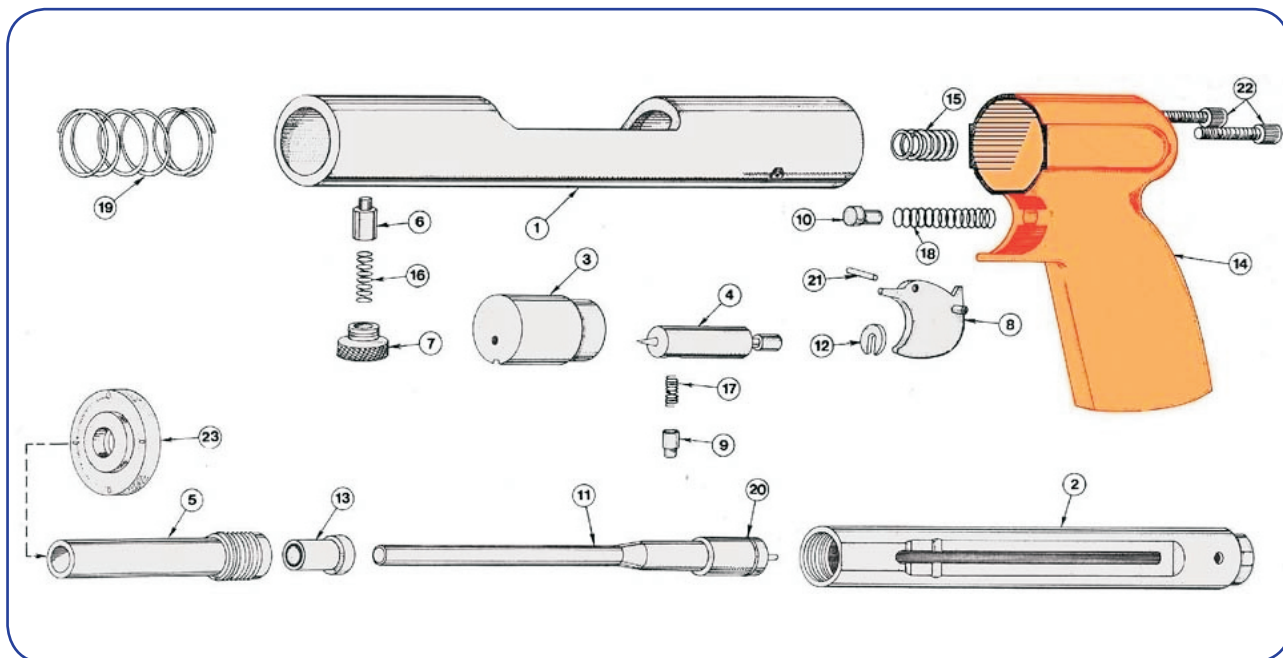


Description

The LVM70 is a low velocity single shot tool which can be used to install ballistic point pins, .300 head drive pins, 8mm head drive pins and 1/4"- 20 threaded studs up to 3" in total length. Designed for the maintenance or residential contractor who has light to moderate volume pins needs, this lightweight, lower cost tool features an automatic cartridge ejection system. The tool is ideal for use by the framer who needs to fasten pins up to 3" in length. The function of the LVM70 tool is based on the impact principle where the internal drive piston impacts the fastener to drive into the base material.

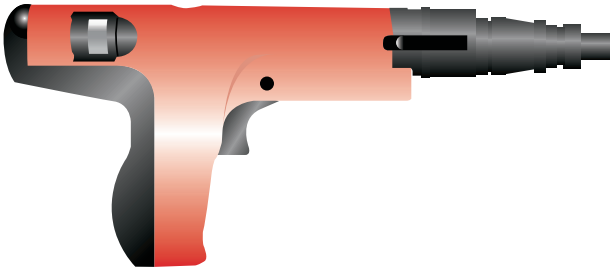
Features & Benefits

- Lightweight
- 0.22 calibre cartridge
- Fastens upto 72mm drive pin
- Ideal for 6mm threaded studs
- Suitable for fixing wood nailers, electrical boxes and concrete forming



Item	LV721 Part Number	Original Part Number	Description
1	LV2001	A101	RECIEVER
2	LV2002	A102	BARREL
3	LV2003	8104	BREECH BLOCK
4	LV2004	A106	FIRING PIN
5	LV2005	A106	NOSE PIECE
6	LV2006	A107	PISTON RESET PIN
7	LV2007	A108	RSET PIN CAP
8	LV2008	8109	TRIGGER
9	LV2009	8110	SEAR PIN
10	LV2010	8111	TRIGGER SPRING CAP
11	LV2011	A112	PISTON
12	LV2012	8113	FIRING PIN COLLAR
13	LV1013	814	BUFFER
14	LV1014	A115	HANDLE
15	LV1015	8121	FIRING PIN SPRING
16	LV1016	A122	RESET PIN SPRING
17	LV1017	8123	SEAR PIN SPRING
18	LV1018	8124	TRIGGER RETURN SPRING
19	LV1019	8125 FIRING	MECH SPRING
20	LV1020	A127	PISTON RING
21	LV1021	8128	TRIGGER HINGE PIN
22	LV1022	8130	HANDLE BOLTS
23	LV1023	8142	SPALL GUARD

Low Velocity Tool LV350



Description

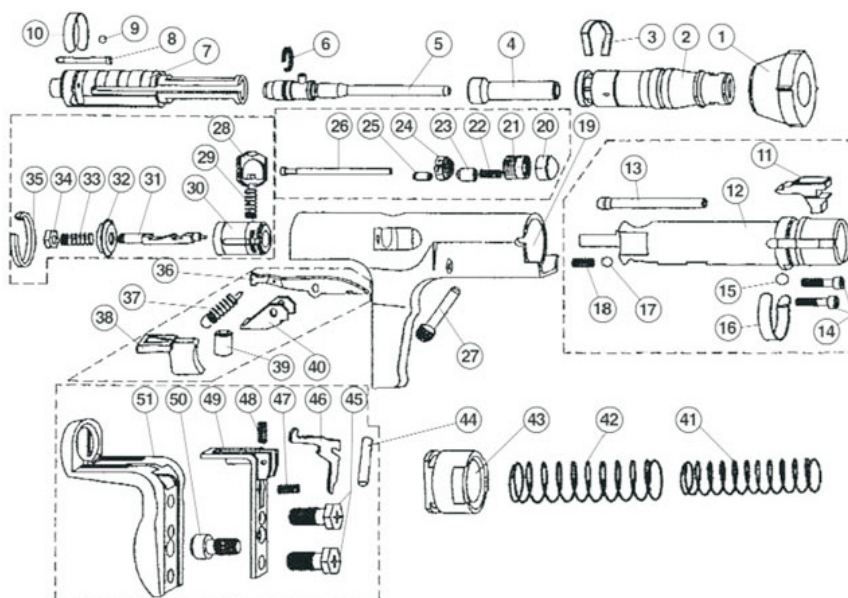
This is a semi automatic low velocity fastening tool ideal for medium to high volume applications. This tool drives pins, clips and clip assemblies into concrete and steel without requiring cords or air lines. Its mobility, compact size and low weight contribute meaningfully to productivity while its long slim nose makes it useful for driving fasteners in some of the most awkward places such as strut channels or junction boxes.

Applications

- Ideal for fastenings of ceiling clip assemblies
- Metal track
- Door Frames
- Concrete forms
- Basket Clips
- Forming Pins

Features & Benefits

- Ergonomic, durable design
- Low velocity full automatic tool
- Supplied with box and accessories
- For pins and stud fasteners in steel
- Medium and heavy duty applications
- Low noise level
- .27 calibre strip load
- Adjustable power control
- Shoot up to 62mm



Item	Part Number	Original Part Number	Item	Part Number	Original Part Number
1	LV35001	STABILIZER	27	LV35027	THREADED PIN
2	LV35002	BASEPLATE 2/S13-STANDARD	28	LV35028	SEAR
3	LV35003	SHEAR CLIP	29	LV35029	SEAR SPRING
4	LV35004	GUIDE 2/F-3-STANDARD	30	LV35030	SPRING GUIDE
5	LV35005	PISTON FLAT END WIRING-STD.	31	LV35031	FIRING PIN
6	LV35006	PISTON RING	32		SPRING DETENT
7	LV35007	PISTON GUIDE	33		FIRING PIN RETURN SPRING
8	LV35008	REGULATION PIN	34	LV35034	FIRING PIN NUT
9	LV35009	1/8" STEEL BALL	35	LV35035	RETAINING RING
10	LV35010	C CLIP FOR PISTON GUIDE	36	LV35036	ADVANCE LEVER KIT
11	LV35011	PISTON STOP	37	LV35037	ADVANCE LEVER SPRING
12	LV35012	STEEL LINER ASSEMBLY	38	LV35038	
13	LV35013	PRESSURE PIN	39	LV35039	
14	LV35014	FRONT ALLEN CAP SCREW	40	LV35040	
15	LV35015	STEEL BALL	41	LV35041	FIRING PIN SPRING KIT
16	LV35016	ANNULAR BALL SPRING	42	LV35042	
17	LV35017	BALL	43	LV35043	END CAP
18	LV35018	SPRING	44	LV35044	RELEASE LEVER PIN
19	LV35019	HOUSING/ADJUSTER KIT	45	LV35045	FRONT CAP SCREW
20	LV35020	DECORATIVE BULLET HEAD	46	LV35046	RELEASE LEVER
21	LV35021	REGULATION KNOB	47		TRIGGER RETURN SPRING
22	LV35022	SNAP SPRING RIP ASSEMBLY	48		COMPRESSION RING
23	LV35023	SNAP FOR KNOB HEAD	49		SUPPORT STRIP ASSEMBLY
24	LV35024	KNOB FIXER	50		HANDLE ALLEN SCREW
25	LV35025	FIXING PIN FOR KNOB	51	LV35051	RUBBER GRIP
26	LV35026	FIXING PIN FOR KNOB FIXER	52	LV35052	FIRING PIN ASY(31/32/33/34)

Low Velocity Tool LV351 / LV351MA



Description

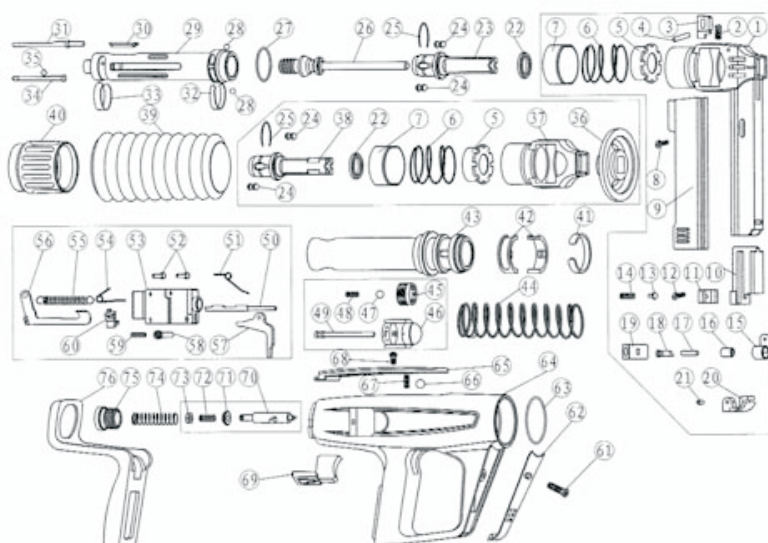
Is designed for driving nails into concrete, steel and other base materials. The LV351 utilizes a captive piston to ensure optimum fastening safety.

Applications

- Ideal for fastenings of ceiling clip assemblies
- Metal track
- Door Frames
- Concrete forms
- Basket Clips
- Forming Pins

Features & Benefits

- Ergonomic, durable design
- Low velocity full automatic tool
- Supplied with box and accessories
- For pins and stud fasteners in steel
- Medium and heavy duty applications
- Low noise level
- .27 calibre strip load
- Adjustable power control
- Shoot up to 62mm



Item	Part Number	Original Part Number		Part Number	Original Part Number
1	PAT35101	MAG. BOX REG.KNOB	42	PAT35142	RET. STOPPER (50-60/70-73)
2	PAT35102	SPRING	43	PAT35143	ST. LINER
3	PAT35103	LOCK	44	PAT35144	PISTON RET. SPRING
4	PAT35104	PIN	45	PAT35145	REG. KNOB
5	PAT35105	PISTON GUIDE NUT	46	PAT35146	REG. KNOB HOLDER
6	PAT35106	MAG. BOX RET. SPRING	47	PAT35147	REG. KNOB BALL 5MM
7	PAT35107	U SHAPE SLEEVE	48	PAT35148	REG. KNOB SPRING
8	PAT35108	SCREW	49	PAT35149	REG. KNOB FIXING PIN
9	PAT35109	MAG. BOX CAP	50	PAT35150	AD. LEVER PIN
10	PAT35110	NAIL SUPPLIER	51	PAT35151	FIR. PIN SPRING
11	PAT35111	STOPPER	52	PAT35152	FIR. PIN GUIDE BOBBIN
12	PAT35112	SCREW	53	PAT35153	FIR. PIN GUIDE
13	PAT35113	ROUND HEAD PIN	54	PAT35154	TRIGGER AD. SPRING
14	PAT35114	SPRING	55	PAT35155	AD. LEVER SPRING
15	PAT35115	FLAT SPRING	56	PAT35146	AD. LEVER
16	PAT35116	SPRING BOBBIN	57	PAT35157	TRIGGER LEVER
17	PAT35117	BOBBIN PIN	58	PAT35158	THREADED PIN
18	PAT35118	LOCK PIN	59	PAT35159	FIR. PIN GUIDE PIN
19	PAT35119	OPEN KNOB	60	PAT35160	TRIGGER AD.
20	PAT35120	MAG. BOX END CAP	61	PAT35161	SILENCER CAP SCREW
21	PAT35121	MAG. END CAP PIN	62	PAT35162	SILENCER CAP
22	PAT35122	RUBBER STOP	63	PAT35163T35161	O RING
23	PAT35123	MAG. NOSE PIECE	64	PAT35164	HOUSING
24	PAT35124	NOSE PIECE ST. BALL	65	PAT35165	HOUSING CAP
25	PAT35125	NOSE PIECE ST. BALL CLIP	66	PAT35166	PRESSURE SEAR BALL 8MM
26	PAT35126	PISTON	67	PAT35167	PRESSURE SEAR SPRING
27	PAT35127	LOCK CLIP	68	PAT35168	HOUSING CAP SCREW
28	PAT35128	FIXING SL. BALL 6MM	69	PAT35169	TRIGGER
29	PAT35129	PISTON GUIDE	70	PAT35170	FIR. PIN ASSEMBLY
30	PAT35130	PRESSURE SEAR	71	PAT35171	FIR. PIN DETENT
31	PAT35131	PRESSURE PIN	72	PAT35172	FIR. PIN DETENT SPRING
32	PAT35132	FIXING SL. C CLIP	73	PAT35173	FIR. PIN NUT
33	PAT35133	PISTON GUIDE C CLIP	74	PAT35174	FIR. PIN RETURNING SPRING
34	PAT35134	REG. PIN (22 TO 25)	75	PAT35175	END CAP
35	PAT35135	REG. PIN BALL 1/8"	76	PAT35176	RUBBER GRIP
36	PAT35136	STABILIZER (22,24,25,38)	77	PAT35177	MAG. GUIDE ASSEMBLY
37	PAT35137	SINGLE SHOT GUIDE	78	PAT35178	SIN. SHOT GUIDE ASSEMBLY
38	PAT35138	SINGLE SHOT NOSE PIECE	79	PAT35179	MAG. BOX ASSEMBLY
39	PAT35139	PROTECTING SLEEVE	80	PAT35180	PISTON GUIDE ASSEMBLY
40	PAT35140	STEEL LINER NUT	81	PAT35181	TRIG. ASSEMBLY
41	PAT35141	RET. STOPPER C CLIP	82	PAT35182	POWER REG. ASSEMBLY

Low Velocity Tool LV450



Description

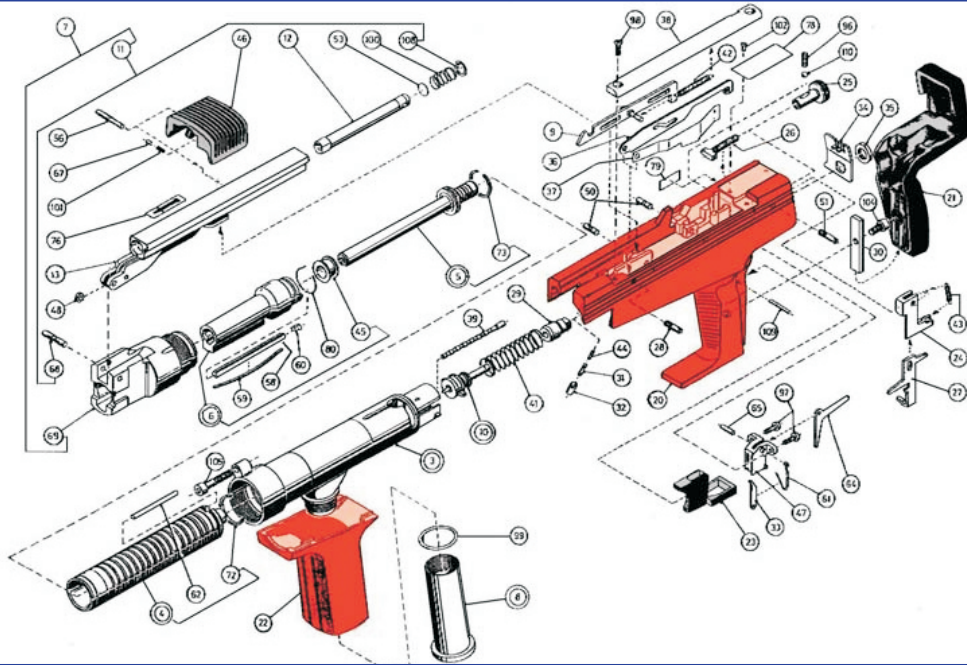
Ideal for universal fastening to concrete, brick and steel using a wide range of drive pins. It's versatility allows the user to fasten virtually everything. It's inbuilt power regulation system means that most fastening jobs can be accomplished with one power load level. Silenced operation and low recoil increase operator comfort leading to higher productivity.

Applications

- Ideal for fastenings of timber to concrete
- Brick ties to steel
- Timber to steel
- Steel to steel

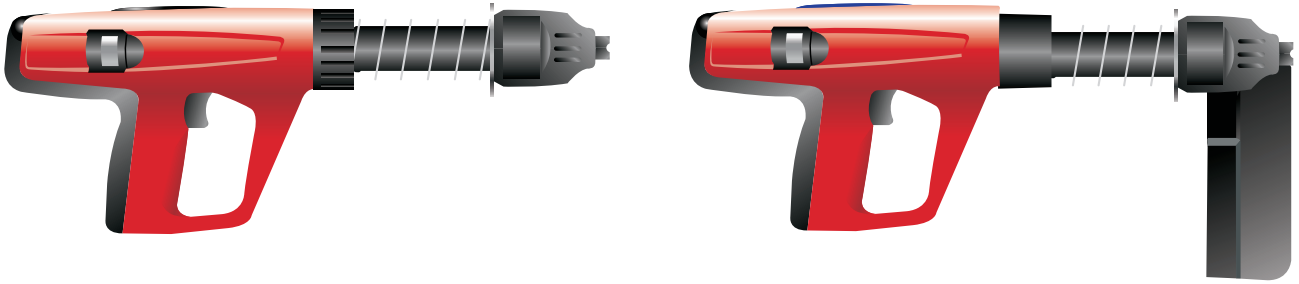
Features & Benefits

- 3.16kg weight
- Fire nails up to 97mm
- Power regulator facility
- Built in silencer system
- Low velocity piston tool
- Supplied with box and accessories
- Ideal for light weight and heavy duty applications
- Front guide adaptable for eyelet and threaded studs.



Item	Part Number	Original Part Number		Part Number	Original Part Number
3	LV4501	STEEL LINER	45	LV4536	STOP RING
4	LV4502	PISTON GUIDE	46	LV4537	COCKING GRIP
5	LV4503	PISTON 45	47	LV4538	HOLDER
6	LV4504	FASTENER GUIDE	48	LV4539	CIRCLIP
7	LV4505	BASE PLATE ASSEMBLY	50	LV4540	PIVOT PIN
8	LV4506	SILENCER ASSEMBLY	51	LV4541	SPECIAL SCREW
9	LV4507	CONNECTOR ASSEMBLY	53	LV4542	DISC
10	LV4508	FIRING PIN ASSEMBLY	56	LV4543	THREADED PIN
11	LV4509	COCKING LEVER ASSEMBLY	58	LV4544	FASTENER DETENT
12	LV4510	RAM ASSEMBLY	59	LV4545	SPRING
13	LV4511	COCK LEV PARTS SET	60	LV4546	PIVOT PIN
20	LV4512	HOUSING	61	LV4547	DETENT SPRING
21	LV4513	RUBBER GRIP	62	LV4548	PRESSURE PIN
22	LV4514	JACKET	64	LV4549	RELEASE LEVER
23	LV4515	TRIGGER	65	LV4550	DOWEL PIN
24	LV4516	SEAR GUIDE	67	LV4551	FRICTION PIN
25	LV4517	THUMBWHEEL	68	LV4552	PIVOT PIN
26	LV4518	REGULATING SCREW	69	LV4553	BASE PLATE 45/S1
27	LV4519	SEAR	72	LV4554	RETAINING RING
28	LV4520	SPECIAL SCREW	73	LV4555	RETAINING RING
29	LV4521	SPRING GUIDE	76	LV4556	FASTENER SYMBOL
30	LV4522	SUPPORT STRIP	79	LV4557	DATE PLATE
31	LV4523	SPECIAL PIN	80	LV4558	RETAINING PLATE
32	LV4524	SPECIAL PIN SLEEVE	96	LV4559	COMP SPR 0.5X5.3X121
33	LV4525	MAGAZINE DETENT	98	LV4561	SELF TAPPING SCREW MAX12
34	LV4526	RETENTION PLATE	99	LV4562	O-RING 32X3
35	LV4527	NUT	100	LV4563	COMP SPRING 1X12.5X21
36	LV4528	TRANSPORT LEVER	101	LV4564	COMP SPRING 5,2.8X8
37	LV4529	LEAF SPRING	104	LV4565	ALLEN CAP SCREW M6X12
38	LV4530	COVER PLATE	105	LV4566	ALLEN CAP SCREW M6X12
39	LV4531	REGULATING PIN	108	LV4567	CIRCLIP 13X1
41	LV4532	FIRING PIN SPRING	109	LV4568	DOWEL PIN 3M 6X24
42	LV4533	TENSION SPRING	110	LV4569	STEEL PIN 7/32" IV
43	LV4534	TENSION SPRING	-	LV4570	PLASTIC CASE
44	LV4535	COMP SPRING			

Low Velocity Tool LV460 / LV460MA



Description

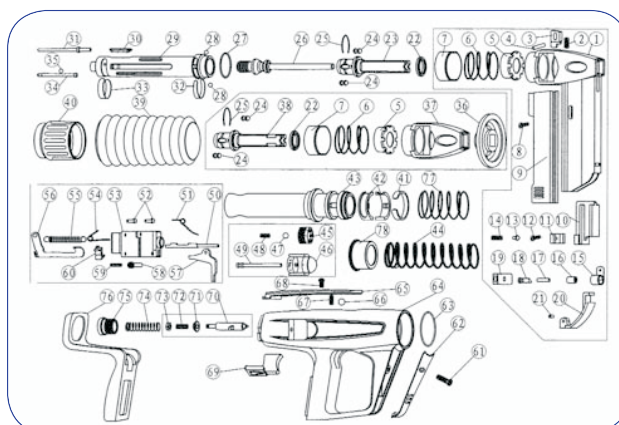
The LV460M is fast, accurate, safe, versatile, low velocity fastening tool. It is a fully automatic tool with a 10-nail magazine ideal for repetitive fastenings to solid brick, concrete and steel with collated nails up to 27mm and single nails up to 37mm length. Its versatility allows the user to fasten virtually everything, with significant cost savings over more traditional fastening methods. Fastening can be made directly, through the object being fastened without drilling holes, aligning and bolting materials together. No external power source is required, as the system is completely portable, which allows the tool to be used in some of the most awkward places.

Features & Benefits

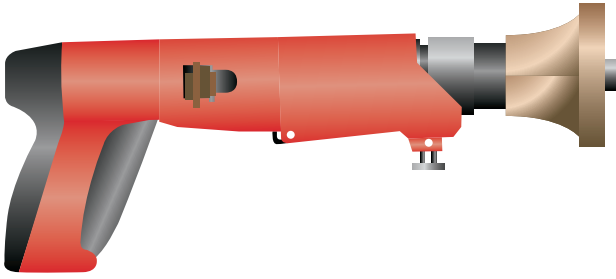
- Ergonomic, durable design
- Low velocity full automatic tool
- Supplied with box and accessories
- For pins and stud fasteners in steel
- Medium and heavy duty applications
- Low noise level
- .27 calibre strip load
- Adjustable power control
- Shoots up to 60mm magazine nail.

Item	Part Number	Original Part Number
1	PAT4601	MAG. BOX
2	PAT4602	SPRING
3	PAT4603	LOCK
4	PAT4604	PIN
5	PAT4605	PISTON GUIDE NUT
6	PAT4606	MAG. BOX RET. SPRING
7	PAT4607	U SHAPE SLEEVE
8	PAT4608	SCREW
9	PAT4609	MAG. BOX CAP
10	PAT4610	NAIL SUPPLIER
11	PAT4611	STOPPER
12	PAT4612	SCREW
13	PAT4613	ROUND HEAD PIN
14	PAT4614	SPRING
15	PAT4615	FLAT SPRING
16	PAT4616	SPRING BOBBIN
17	PAT4617	BOBBIN PIN
18	PAT4618	LOCK PIN
19	PAT4619	OPEN KNOB
20	PAT4620	MAG. BOX END CAP
21	PAT4621	MAG. END CAP PIN
22	PAT4622	RUBBER STOP
23	PAT4623	MAG. NOSE PIECE
24	PAT4624	NOSE PIECE ST. BALL
25	PAT4625	NOSE PIECE BALL CLIP
26	PAT4626	PISTON
27	PAT4627	LOCK CLIP
28	PAT4628	FIX. SLEEVE BALL 6MM
29	PAT4629	PISTON GUIDE
30	PAT4630	PRES. SEAR
31	PAT4631 P	RESSURE PIN
32	PAT4632	FIX. SLEEVE C CLIP
33	PAT4633	PISTON GUIDE C CLIP
34	PAT4634	REG. PIN
35	PAT4635	REG. PIN BALL 1/8"
36	PAT4636	STABILISER
37	PAT4637	SIN. SHOT GUIDE
38	PAT4638	SIN. SHOT NOSE PIECE
39	PAT4639	PROTECTING SLEEVE
40	PAT4640	STEEL LINER NUT
41	PAT4641	RET. STOPPER C CLIP
42	PAT4642	RET. STOPPER
43	PAT4643	STEEL LINER
44	PAT4644	PISTON RET. SPRING
45	PAT4645	REG.KNOB
46	PAT46046	REG. KNOB HOLDER
47	PAT46047	REG. KNOB BALL 5MM
48	PAT46048	REG. KNOB SPRING
49	PAT46049	REG. KNOB FIXING PIN
50	PAT46050	ADV. LEVER PIN
51	PAT46051	FIR. PIN SPRING
52	PAT46052	FIR. PIN GUIDE BOBBIN

Item	Part Number	Original Part Number
53	PAT46053	FIR. PIN GUIDE
54	PAT46054	TRIG. ADV. SPRING
55	PAT46055	ADV. LEVER SPRING
56	PAT46056	ADV. LEVER
57	PAT46057	TRIG.LEVER
58	PAT46058	THREADED PIN
59	PAT46059	FIR. PIN GUIDE PIN
60	PAT46060	TRIG. ADVANCER
61	PAT46061	SIL. CAP SCREW
62	PAT46062	SILENCER CAP
63	PAT46063	O RING
64	PAT46064	HOUSING
65	PAT46065	HOUSING CAP
66	PAT46066	PRES. SEAR BALL 8MM
67	PAT46067	PRES. SEAR SPRING
68	PAT46068	HOU. CAP SCREW
69	PAT46069	TRIGGER
70	PAT46070	FIR. PIN ASSEMBLY
71	PAT46071	FIR. PIN DETENT
72	PAT46072	FIR. PIN DETENT SPRING
73	PAT46073	FIR. PIN NUT
74	PAT46074	FIR. PIN RET. SPRING
75	PAT46075	END CAP
76	PAT46076	RUBBER GRIP
77	PAT46077	ENHANCED SPRING
78	PAT46078	SPRING SLEEVE
79	PAT46079	MAG. GUIDE ASS. (22 TO 25)
80	PAT46080	SIN. SHOT GUIDE ASS. (22,24,25,38)
81	PAT46081	MAGA. BOX ASS. (1 TO 19)
82	PAT46082	PISTON GUIDE ASS. (27 TO 29 & 31 TO 73)
83	PAT46083	TRIGGER ASS. (50 TO 60 & 70 TO 73)
84	PAT46048	POWER REG. ASS. (45 TO 49)



Low Velocity Tool LV600



Description

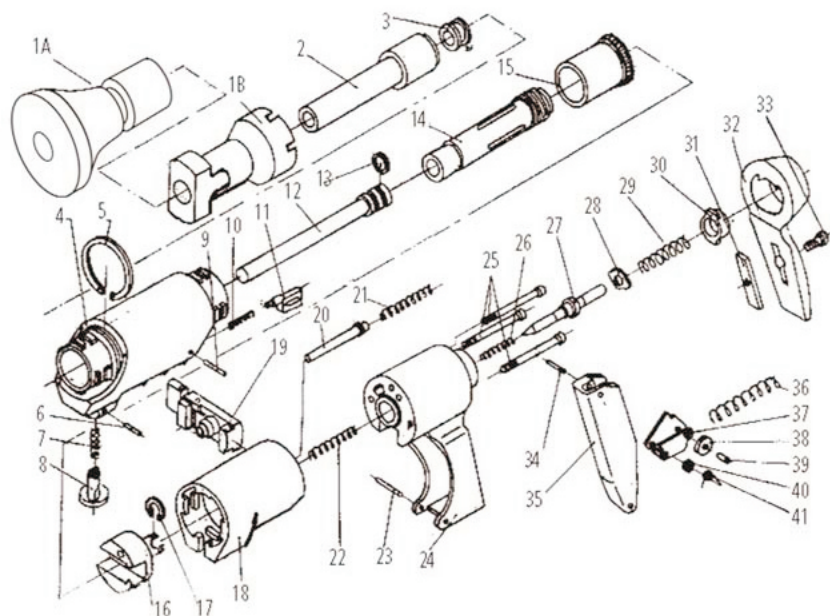
Is ideal for heavy duty fastening into high strength concrete and structural steel, in addition to being a powerful and reliable single cartridge tool. Its proven design, reliable performance and ease of maintenance make it an excellent choice when extremely high impact fastening is required. This tool features an easy load ejector and has a low recoil for greater

Applications

- For hanging sprinkler pipe
- Electrical fixtures
- Heavy duty applications for concrete and steel

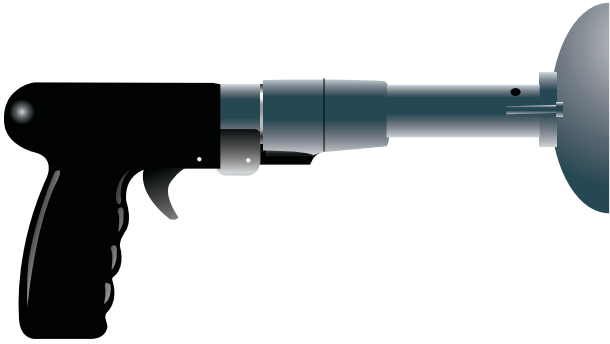
Features & Benefits

- 3.16kg weight
- Fire nails up to 72mm
- Built in silencer system
- Low velocity piston tool
- Uses standard 6.8/11mm and long 6.8/18mm cartridges
- Ideal for light weight and heavy duty applications
- Front guide adaptable for eyelet nails and threaded studs
- Ideal for shooting 10mm threaded studs
- Can shoot heavy 4.5mm nails.



Item	Part Number	Original Part Number		Part Number	Original Part Number
1A	LV600-1	SHIELD	20	LV600-23	PUSH PIN
1B	LV600-2	SHIELD	21	LV600-24	SALVE SPRING
2A	LV600-3	FASTENER GUIDE	22	LV600-25	BREECH BLOCK SPRING
2B	LV600-4	FASTENER GUIDE	23	LV600-26	PIN B4X16
3	LV600-5	BUFFER	24	LV600-27	TOOL COVER PLUG
4	LV600-6	TOOL TUBE	25	LV600-28	BOLT M6X55
5	LV600-7	TUBE SEAR SPRING	26	LV600-29	FIRING PIN SPRING
6	LV600-8	PIN 4X16	27	LV600-30	FIRING PIN
7	LV600-9	LOCATING PIN SPRING	28	LV600-31	COVER
8	LV600-10	LOCATING PIN	29	LV600-32	FIRING SPRING
9	LV600-11	PIN 4X20	30	LV600-33	COVER PLUG
10	LV600-12	SEAR SPRING PIN	31	LV600-34	TUBE
11	LV600-13	SEAR	32	LV600-35	RUBBER HANDLE
12A	LV600-14	PISTON	33	LV600-36	BOLT M6X12
12B	LV600-15	PISTON	34	LV600-37	PIN D4X18
13	LV600-16	PISTON RING	35	LV600-38	TRIGGER
14	LV600-17	BARREL	36	LV600-39	TRIGGER SPRING
15	LV600-18	BREECH PLUG	37	LV600-40	TRIGGER FEEDING LEVER
16	LV600-19	BREECH BLOCK	38	LV600-41	ROLLER
17	LV600-20	BREECH BL. LOCK LOOP	39	LV600-42	PIN D4X8
18	LV600-21	RECIEVER	40	LV600-43	SPRING ROLLER
19	LV600-22	DELIVER LOAD APPL.	41	LV600-44	FEEDING LEVER CONTORT
					RAM ROD
					FACTORY REPLACEMENT ONLY

High Velocity Tool HV500

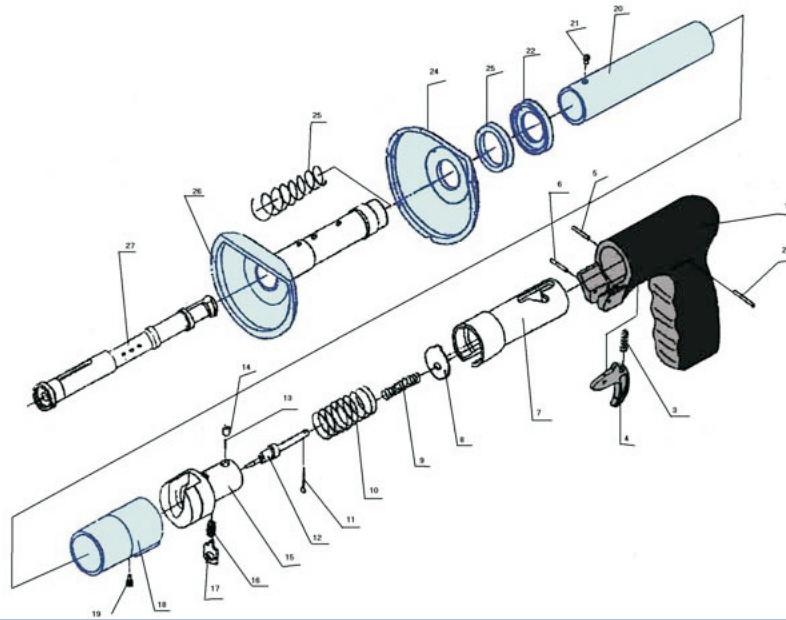


Description

The high velocity tool HV500 has a barrel that fires 6mm drive pins using .25 caliber loads. The HV 500 contains a number of features which add to the safety, versatility and ease of operation of the tool.

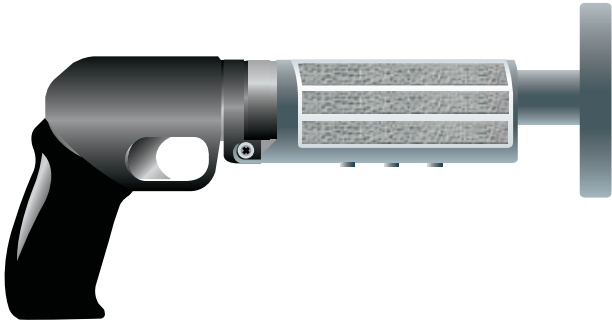
Features & Benefits

- 6mm barrel
- Fires 6mm drive pins
- Uses 0.25 caliber loads
- Efficient low cost velocity tool
- High durability and low maintenance costs
- Available with metal tool box and accessories



Item	Part Number	Description
1	HV5001	HANDLE
2	HV5002	PIN
3	HV5003	TRIGGER SPRING
4	HV5004	TRIGGER
5	HV5005	TRIGGER PIN
6	HV5006	HINGE PIN
7	HV5007	LINER
8	HV5008	LINING PLATE
9	HV5009	FIRING PIN SPRING
10	HV5010	MAIN SPRING
11	HV5011	SPLIT PIN
12	HV5012	FIRING PIN
13	HV5013	STRIPPING PLUNGER SPRING
14	HV5014	STRIPPING PLUNGER
15	HV5015	YORK
16	HV5016	SEAR SPRING
17	HV5017	SEAR
18	HV5018	CONNECTION HOUSING
19	HV5019	SCREW
20	HV5020	BARREL HOUSING
21	HV5021	SCREW
22	HV5022	TAB WASHER
23	HV5023	RUBBER WASHER
24	HV5024	SHIELD LID
25	HV5025	BARREL SPRING
26	HV5026	SAFETY GUARD
27	HV5027	BARREL

High Velocity Tool HV20

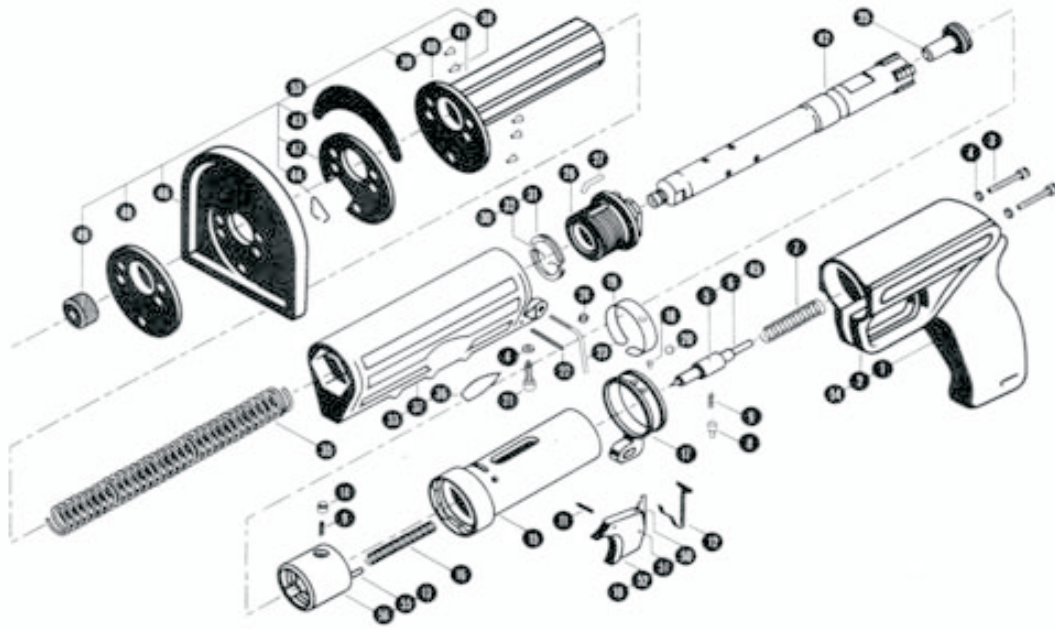


Description

The high velocity tool HV J20 has a barrel that fires 1/4" drive pins using .22 caliber loads. The HV J20 contains a number of features which add to the safety, versatility and ease of operation of the tool.

Features & Benefits

- 1/4" barrel
- Fires 1/4" drive pins
- Uses 0.22 caliber loads
- Tool will not fire if the shield is removed
- Ported barrels eliminate recoil as excess gases escape
- Firing pin indicator clearly shows when tool is cocked and ready to fire
- Rubber lined safety shield protects operators from dust, chips or ricochets
- Angle fire control prevents the tool being discharged during loading, handling, dropping or preparing to fire
- Tool will not fire until it is cocked by being pushed hard against a flat, solid object at a pressure of over 25lbs.



Item	Part Number	Original Part Number	Item	Part Number	Original Part Number
1	HVJ2001	HANDLE GRIP	27	HVJ2027	INTERLOCK PIN
2	HVJ2002	PLASTIC HANDLE	30	HVJ2030	BARREL LOCK ASSY
3	HVJ2003	HANDLE SCREW (2)	31	HVJ2031	BARREL LOCK HALVES
4	HVJ2004	FLAT WASHER	32	HVJ2032	BARREL LOCK SPRING
5	HVJ2005	FIRING PIN BODY	33	HVJ2033	HOUSING ASSEMBLY
6	HVJ2006	NYLON INSERT	35	HVJ2035	SHIELD SPRING
7	HVJ2007	FIRING PIN SPRING	36	HVJ2036	J20 DECAL
8	HVJ2008	FIRING SPRING PAWL	37	HVJ2037	HOUSING
9	HVJ2009	FIRING SPRING PAWL SPRING	38	HVJ2038	SHIELD RIVET
10	HVJ2010	TRIGGER ASSEMBLY	39	HVJ2039	UPPER PLATE ASSY
11	HVJ2011	TRIGGER PIN	40	HVJ2040	UPPER PLATE
12	HVJ2012	TRIGGER RETURN SPRING	41	HVJ2041	SHIELD TUBE
13	HVJ2013	BREECH LOCK ASSY	42	HVJ2042	1/4 BARREL
14	HVJ2014	BREECH LOCK PAWL	43	HVJ2043	SHIELD METAL CAL
15	HVJ2015	FIRING MECH HOUSING	44	HVJ2044	SHIELD INDEX SPRING
16	HVJ2016	FIRING MECH SPRING	45	HVJ2045	FIRING PIN ASSY
17	HVJ2017	HINGE RING	46	HVJ2046	LOWER SHIELD PLATE
18	HVJ2018	HINGE RING STOP PIN	47	HVJ2047	SPACER PLATE
19	HVJ2019	DETENT SPRING	48	HVJ2048	CATCH PLATE
20	HVJ2020	3/16 STEEL BALL	49	HVJ2049	THREAD PROT CAP
21	HVJ2021	BARREL GUIDE SCREW	50	HVJ2050	TRIGGER SEAR
22	HVJ2022	ROLL PIN	51	HVJ2051	SEAR RIVET
23	HVJ2023	EJECTOR HINGE SCREW	52	HVJ2052	TRIGGER MOULDING
24	HVJ2024	10-24 UNC NUT	53	HVJ2053	SHIELD ASSEMBLY
25	HVJ2025	BREECH PLUG 1/4 (8MM) 3/8	54	HVJ2054	HANDLE ASSEMBLY
25	HVJ2025	BREECH PLUG 3/16	55	HVJ2055	COCKING ROD
26	HVJ2026	HOUSING COLLAR	56	HVJ2056	BREECH LOCK

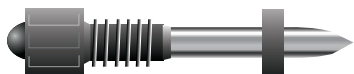
Plastic Washered Nails SDN

Product Code	Shank Diameter (mm)	Nail Length (mm)	Uni. Washer Diameter (mm)	Inner and Outer Box Quantity
SDN13K	3.8	13	8 / 9	100 / 3000
SDN16K	3.8	16	8 / 9	100 / 3000
SDN19K	3.8	19	8 / 9	100 / 3000
SDN22	3.8	22	8 / 9	100 / 3000
SDN27	3.8	27	8 / 9	100 / 3000
SDN32	3.8	32	8 / 9	100 / 3000
SDN37	3.8	37	8 / 9	100 / 3000
SDN42	3.8	42	8 / 9	100 / 3000
SDN47	3.8	47	8 / 9	100 / 3000
SDN52	3.8	52	8 / 9	100 / 3000
SDN57	3.8	57	8 / 9	100 / 2000
SDN62	3.8	62	8 / 9	100 / 2000
SDN67	3.8	67	8 / 9	100 / 2000
SDN72	3.8	72	8 / 9	100 / 2000
SDN82	3.8	82	8 / 9	100 / 2000
SDN97	3.8	97	8 / 9	100 / 2000

Metal Washered Nails SNK

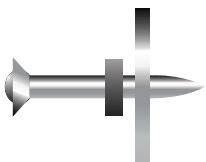
Product Code	Shank Diameter (mm)	Nail Length (mm)	Uni. Washer Diameter (mm)	Inner and Outer Box Quantity
SNK13K	3.7	13	12	100 / 3000
SNK16K	3.7	16	12	100 / 3000
SNK19K	3.7	19	12	100 / 3000
SNK22	3.7	22	12	100 / 3000
SNK27	3.7	27	12	100 / 3000
SNK32	3.7	32	12	100 / 3000
SNK37	3.7	37	12	100 / 3000
SNK42	3.7	42	12	100 / 3000
SNK47	3.7	47	12	100 / 3000
SNK52	3.7	52	12	100 / 3000
SNK57	3.7	57	12	100 / 2000
SNK62	3.7	62	12	100 / 2000
SNK67	3.7	67	12	100 / 2000
SNK72	3.7	72	12	100 / 2000
SNK82	3.7	82	12	100 / 2000
SNK97	3.7	97	12	100 / 2000

Plastic Washered Threaded Studs TS-DN



Product Code	Shank Diameter (mm)	Nail Length (mm)	Uni. Washer Diameter (mm)	Inner and Outer Box Quantity
TS6-08-12DN	6	8	12	100 /
TS6-08-17DN	6	8	17	100 /
TS6-08-22DN	6	8	22	100 /
TS6-08-27DN	6	8	27	100 /
TS6-12-12DN	6	12	12	100 /
TS6-12-17DN	6	12	17	100 /
TS6-12-22DN	6	12	22	100 /
TS6-12-27DN	6	12	27	100 /
TS6-12-32DN	6	12	32	100 /
TS6-12-42DN	6	12	42	100 /

Metal Washered Threaded Studs TS-NK



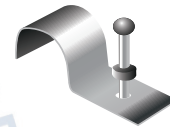
Product Code	Shank Diameter (mm)	Nail Length (mm)	Uni. Washer Diameter (mm)	Inner and Outer Box Quantity
SDN27W23	3.7	27	27	100 /
SDN32W23	3.7	32	32	100 /
SDN37W23	3.7	37	37	100 /
SDN42W23	3.7	42	42	100 /
SDN47W23	3.7	47	47	100 /
SDN52W23	3.7	52	52	100 /
SDN57W23	3.7	57	57	100 /
SDN62W23	3.7	62	62	100 /
SDN67W23	3.7	67	67	100 /
SDN72W23	3.7	72	72	100 /

Ceiling Clip X-CC

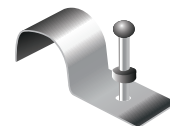
Product Code	Shank Diameter (mm)	Nail Length (mm)	Washer Diameter (mm)	Inner and Outer Box Quantity
X27CC	3.7	27	8 / 9	100 /
X32CC	3.7	32	8 / 9	100 /

Eyelet Pin TB

Product Code	Shank Diameter (mm)	Nail Length (mm)	Washer Diameter (mm)	Inner and Outer Box Quantity
EP22TB	3.7	5X10	22	100 /
EP27TB	3.7	5X10	27	100 /
EP32TB	3.7	5X10	32	100 /

Conduit Clip X-FB1

Product Code	Shank Diameter (mm)	Nail Length (mm)	Washer Diameter (mm)	Inner and Outer Box Quantity
X13FB1	3.7	13	8 / 9	100 /
X19FB1	3.7	19	8 / 9	100 /
X26FB1	3.7	26	8 / 9	100 /

Conduit Clip X-FB2

Product Code	Shank Diameter (mm)	Nail Length (mm)	Washer Diameter (mm)	Inner and Outer Box Quantity
X13FB2	3.7	13	8 / 9	100 /
X19FB2	3.7	19	8 / 9	100 /
X26FB2	3.7	26	8 / 9	100 /

Conduit Clip X-Fb1

Product	Shank Diameter (mm)	Nail Length (mm)	Washer Diameter (mm)	Inner and Outer Box Quantity
X27HS	3.7	27	6	100 /
X32HS	3.7	32	6	100 /

Cat. Magazine Strip Nails X-DN



Product Code	Shank Diameter (mm)	Nail Length (mm)	Head Diameter (mm)	Inner and Outer Box Quantity
X13DNK	3.8	13	8	100 / 3000
X16DNK	3.8	16	8	100 / 3000
X19DNK	3.8	19	8	100 / 3000
X22DN	3.8	22	8	100 / 3000
X27DN	3.8	27	8	100 / 3000
X32DN	3.8	32	8	100 / 3000
X37DN	3.8	37	8	100 / 3000
X42DN	3.8	42	8	100 / 3000
X47DN	3.8	47	8	100 / 3000
X52DN	3.8	52	8	100 / 2000
X57DN	3.8	57	8	100 / 2000
X62DN	3.8	62	8	100 / 2000
X67DN	3.8	67	8	100 / 2000
X72DN	3.8	72	8	100 / 2000

Magazine Strip Forming Nails SL-M



Product Code	Shank Diameter (mm)	Nail Length (mm)	Washer Diameter (mm)	Inner and Outer Box Quantity
SL47M	3.7	47	8 / 9	100 /
SL54M	3.7	54	8 / 9	100 /
SL62M	3.7	62	8 / 9	100 /

Forming Nails SL



Product Code	Shank Diameter (mm)	Nail Length (mm)	Washer Diameter (mm)	Inner and Outer Box Quantity
SL47	3.7	47	8 / 9	100 /
SL54	3.7	54	8 / 9	100 /
SL62	3.7	62	8 / 9	100 /

Headed Drive Pins SDP9

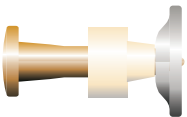
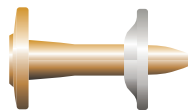
Product Code	Shank Diameter (mm)	Nail Length (mm)	Washer Diameter (mm)	Inner and Outer Box Quantity
SDP938015K	3.8	15	9	100 /
SDP938020K	3.8	20	9	100 /
SDP938025	3.8	25	9	100 /
SDP938030	3.8	30	9	100 /
SDP938035	3.8	35	9	100 /
SDP938040	3.8	40	9	100 /
SDP938060	3.8	60	9	100 /
SDP938070	3.8	70	9	100 /
SDP938080	3.8	80	9	100 /
SDP938090	3.8	90	9	100 /
SDP938100	3.8	100	9	100 /

Metal Washered Nails SMWN9

Product Code	Shank Diameter (mm)	Nail Length (mm)	Washer Diameter (mm)	Inner and Outer Box Quantity
SMWN925	3.8	25	14	100 /
SMWN930	3.8	30	14	100 /

Eyelet Nails SEN9

Product Code	Shank Diameter (mm)	Nail Length (mm)	Washer Diameter (mm)	Inner and Outer Box Quantity
SEN940	4.25	40	3.5	100 /

Metal Sheet Fixing SMSF9**Roofing Nails SRN14**

Product Code	Shank Diameter (mm)	Nail Length (mm)	Washer Diameter (mm)	Inner and Outer Box Quantity
SMSF916	4.1	16	14	100 /
SMSF919	4.1	19	14	100 /
SRN14	4.5	25	14	100 /

High Velocity Drive Pins DP6–HV



Product Code	Shank Diameter (mm)	Nail Length (mm)	Head Diameter (mm)	Inner and Outer Box Quantity
DP625HV	3.8	25	6	100 /
DP632HV	3.8	32	6	100 /
DP638HV	3.8	38	6	100 /
DP651HV	3.8	51	6	100 /
DP663HV	3.8	63	6	100 /
DP676HV	3.8	76	6	100 /

High Velocity Drive Pins DP1/4"–HV



Product Code	Shank Diameter (mm)	Nail Length (mm)	Head Diameter (mm)	Inner and Outer Box Quantity
DP1/425HV	3.8	25	1/4	100 /
DP1/432HV	3.8	32	1/4	100 /
DP1/438HV	3.8	38	1/4	100 /
DP1/451HV	3.8	51	1/4	100 /
DP1/463HV	3.8	63	1/4	100 /
DP1/476HV	3.8	76	1/4	100 /

High Velocity Eyelet Nails EN–HV



Product Code	Shank Diameter (mm)	Nail Length (mm)	Head Diameter (mm)	Inner and Outer Box Quantity
EN650HV	3.8	50	6MM	100 /
EN1/450HV	4.2	50	(2") 1/4"	100 /

High Velocity Threaded Studs
1/4" 20UNC TS–HV

Product Code	Shank Diameter (mm)	Nail Length (mm)	Head Diameter (mm)	Inner and Outer Box Quantity
TS1232HV	3.8	1/2"	1-1/4"	100 /
TS2032HV	3.8	3/4"	1-1/4"	100 /
TS2832HV	3.8	1-1/8"	1-1/4"	100 /

Hardened Masonry Nail White Zinc HMN-W



Hardened Masonry Nail Black Phosphate HMN-B



Product Code	Shank Diameter (mm)	Shank Length (mm)	Inner and Outer Box Quantity
HMN20016W	2.0	16	100 /
HMN20016B	2.0	16	100 /
HMN20020W	2.0	20	100 /
HMN20020B	2.0	20	100 /
HMN20025W	2.0	25	100 /
HMN20025B	2.0	25	100 /
HMN20030W	2.0	30	100 /
HMN20030B	2.0	30	100 /
HMN20040W	2.0	40	100 /
HMN20040B	2.0	40	100 /
HMN25025W	2.5	25	100 /
HMN25025B	2.5	25	100 /
HMN25030W	2.5	30	100 /
HMN25030B	2.5	30	100 /
HMN25035W	2.5	35	100 /
HMN25035B	2.5	35	100 /
HMN25040W	2.5	40	100 /
HMN25040B	2.5	40	100 /
HMN25050W	2.5	50	100 /
HMN25050B	2.5	50	100 /
HMN25060W	2.5	60	100 /
HMN25060B	2.5	60	100 /
HMN30030W	3.0	30	100 /
HMN30030B	3.0	30	100 /
HMN30040W	3.0	40	100 /
HMN30040B	3.0	40	100 /
HMN30050W	3.0	50	100 /
HMN30050B	3.0	50	100 /
HMN30060W	3.0	60	100 /
HMN30060B	3.0	60	100 /
HMN30070W	3.0	70	100 /
HMN30070B	3.0	70	100 /
HMN35050W	3.5	50	100 /
HMN35050B	3.5	50	100 /
HMN35060W	3.5	60	100 /
HMN35060B	3.5	60	100 /
HMN35070W	3.5	70	100 /
HMN35070B	3.5	70	100 /
HMN35080W	3.5	80	100 /
HMN35080B	3.5	80	100 /
HMN35090W	3.5	90	100 /
HMN35090B	3.5	90	100 /
HMN35100W	3.5	100	100 /
HMN35100B	3.5	100	100 /
HMN42075W	4.2	75	100 /
HMN42075B	4.2	75	100 /
HMN42080W	4.2	80	100 /
HMN42080B	4.2	80	100 /
HMN42090W	4.2	90	100 /
HMN42090B	4.2	90	100 /
HMN42100W	4.2	100	100 /
HMN42100B	4.2	100	100 /

Powder Load 6.3x16 PL-S



Product Code	Calibar	Cartridge Diameter (mm)	Cartridge Length (mm)	Cartridge Colour	Cartridge Power	Power Level	Inner/Outer BoxQuantity
PLB6316S	0.25	6.3	16	BLACK	STRONG	6	100 /
PLR6316S	0.25	6.3	16	RED	MEDIUM	5	100 /
PLY6316S	0.25	6.3	16	YELLOW	LOW	4	100 /
PLG6316S	0.25	6.3	16	GREEN	LOWEST	2	100 /

Powder Load 5.6x16 PL-S



Product Code	Anchor Thread Dia. mm	Anchor Length mm	Drill Point mm	Steel Thickness mm	Max. Fix Thickness mm	Washer Diameter mm	Inner/Outer Carton Quantity
PLB5616S	0.22	5.6	16	RED	STRONGEST	5	100 /
PLR5616S	0.22	5.6	16	YELLOW	STRONG	4	100 /
PLY5616S	0.22	5.6	16	GREEN	MEDIUM	3	100 /
PLG5616S	0.22	5.6	16	BROWN	LOW	2	100 /
PLA5616S	0.22	5.6	16	GRAY	LOWEST	1	100 /

Metal Disc Powder Loads PL-D



Product Code	Anchor Thread Dia. mm	Anchor Length mm	Drill Point mm	Steel Thickness mm	Max. Fix Thickness mm	Washer Diameter mm	Inner/Outer Carton Quantity
PLR6312D	0.25	6.3	12	RED	STRONGEST	5	100 /
PLR6310D	0.25	6.3	10	RED	STRONGEST	5	100 /
PLY6310D	0.25	6.3	10	YELLOW	MEDIUM	4	100 /
PLG6310D	0.25	6.3	10	GREEN	LOW	3	100 /
PLB6310D	0.25	6.3	10	BROWN	LOWEST	2	100 /

Plastic Strip Powder Loads PL-M



Product Code	Anchor Thread Dia. mm	Anchor Length mm	Drill Point mm	Steel Thickness mm	Max. Fix Thickness mm	Washer Diameter mm	Inner/Outer Carton Quantity
PLG6811M	0.27	6.8	11	GREEN	VERY LOW	3	100 / 1000
PLY6811M	0.27	6.8	11	YELLOW	MEDIUM	4	100 / 1000
PLR6811M	0.27	6.8	11	RED	HIGH	6	100 / 1000
PLB6811M	0.27	6.8	11	BLACK	VERY HIGH	7	100 / 1000